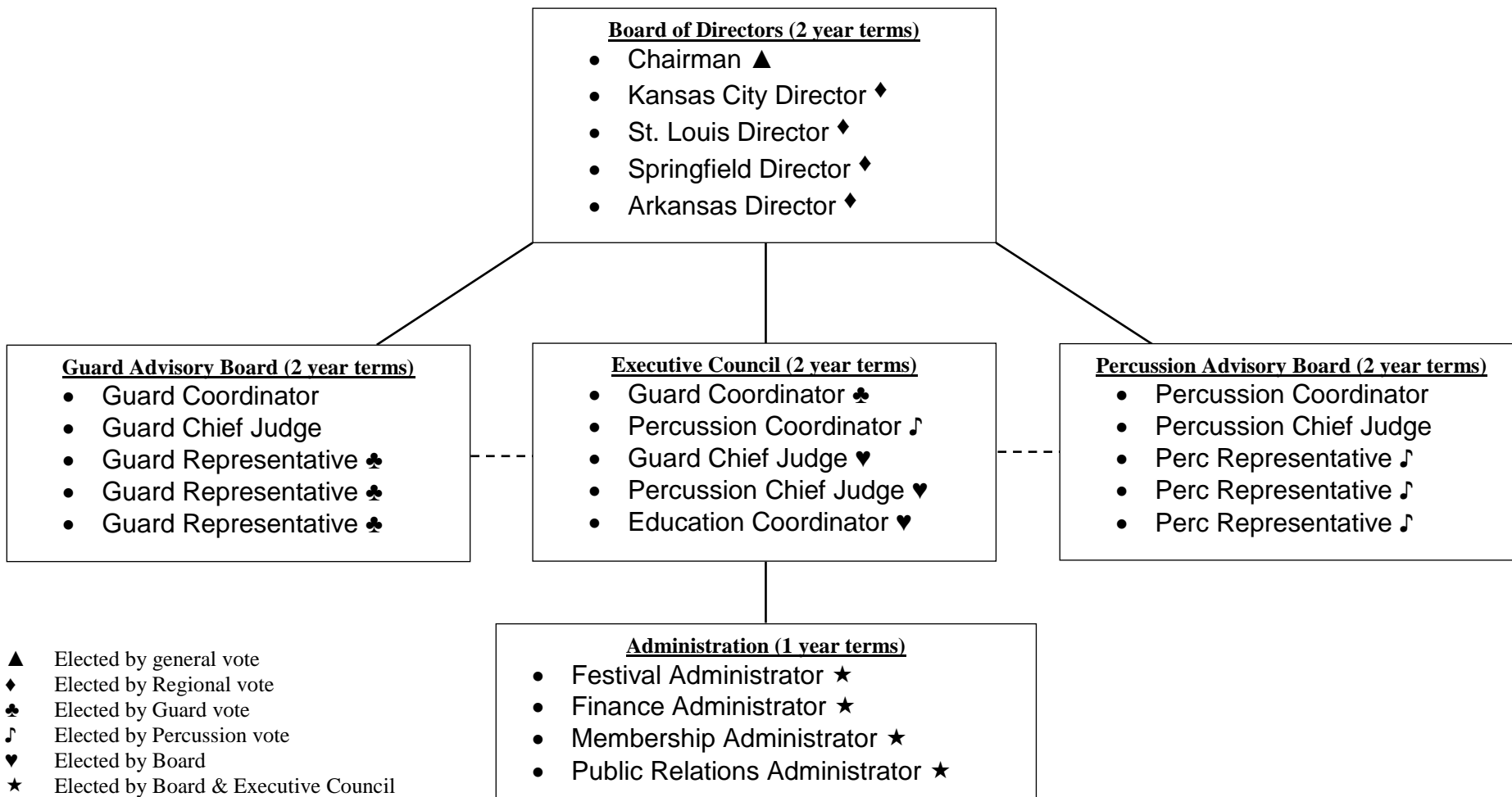


## EXHIBIT 1



## **Election Schedule**

### **Board of Directors**

Chairman: 2016  
 Kansas City Director: 2016  
 St. Louis Director: 2016  
 Springfield Director: 2016/2017  
 Arkansas Director: 2016/2017

### **Executive Council**

Guard Chief Judge: 2016  
 Percussion Chief Judge: 2016/2017  
 Education Coordinator: 2016

### **Guard Advisory Board**

Guard Coordinator: 2016/2017  
 Guard Representative: 2016/2017  
 Guard Representative: 2016  
 Guard Representative: 2016

### **Percussion Advisory Board**

Percussion Coordinator: 2016  
 Perc Representative: 2016  
 Perc Representative: 2016/2017  
 Perc Representative: 2016/2017

## **Election Process**

1. *Chairman election (if applicable, vote occurs at General Meeting)*
2. *Regional Director election (vote occurs at General Meeting)*
3. *Coordinator election (vote occurs at General Meeting)*
4. *Representative election (vote occurs at General Meeting)*
5. *All remaining positions voted on by the Board and Executive Council*

## **Role/Title Changes**

<b>Present Title</b>	<b>New Title</b>	<b>Comments</b>
President	Chairman of BoD	Less day-to-day minutiae in new structure
VP	Festival Administrator	Functions moved to Administrator role
Treasurer	Finance Administrator	Functions moved to Administrator role
PR	PR Administrator	Functions moved to Administrator role
Chief Judge	Guard Chief Judge	Moved to Exec Council, not BoD
Percussion Judge Coordinator	Percussion Chief Judge	Now part of the Percussion Advisory Board
Perc Coord	Perc Coord	Moved to Exec Council, not BoD
RCC's	Regional Director (BoD)	MUCH more important in new structure
Perc Assist Coord	Eliminated	
Education Dir	Education Coordinator	Moved to Exec Council
Guard Reps	Guard Representative	3 on Guard Advisory Board
Perc Reps	Perc Representative	3 on Perc Advisory Board

## **New Roles/Positions**

<b>Title</b>	<b>Comments</b>
Guard Coordinator	Mirrors Perc Coord for Guard side
Membership Administrator	Other half of current Treasurer role

## **Board/Committee Changes**

<b>Present Board</b>	<b>New Board(s)</b>	<b>Comments</b>
Executive Board	BoD	Very high level discussion, future looking (5 members)
Extended Board	BoD Exec Council	Mix of vision/direction of MCCGA with daily operations (10 members)
Advisory Boards	Advisory Boards	Works directly with BoD and advises the Exec Council (5 members each)
Full Board	BoD Exec Council Advisory Boards	Everyone included but Administrators (15 members)
Guard Steering Committee	Eliminated	Replaced by Guard Advisory Board